



# Don Quijote

Visit us at [www.DonQuijoteHawaii.com](http://www.DonQuijoteHawaii.com)

SALE EFFECTIVE: Wednesday, September 18 - Tuesday, September 24, 2024

## WAIPAHU STORE EVENTS



**Diamond's Kitchen Huli Huli Chicken**  
Sept. 21 & 22,  
10am - 4pm  
(or while supplies last)

**Karaoke Night**  
Sept. 22,  
4pm - 8pm



**BONELESS CHUCK ROAST**

**5.99** lb.



**BONELESS PORK SHOULDER ROAST**

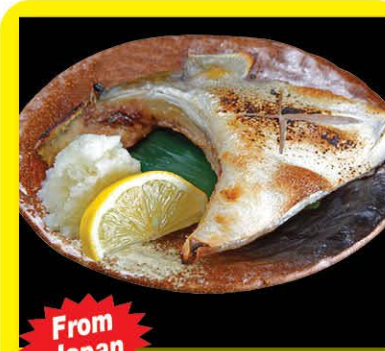
**2.99** lb.



**VALUE PACK CHICKEN**

Thighs, Drumsticks, Picnic, or Leg Quarters.

**2.79** lb.



**HAMACHI KAMA (COLLARS)**

Frozen or previously frozen.

**11.99** lb.



**ENVY APPLES**

**1.99** lb.



**AUSTRALIAN CARA CARA ORANGES**

**4.99** 3 lb.

**2025 OSECHI SETS** SAVE \$500

PRE-ORDER DEADLINE: SUN., SEPT. 29, 2024

Get a taste of New Year's celebrations in Japan. Order sets of Osechi (special New Year's foods) prepared under the auspices of exclusive Japanese restaurants from Kyoto and Hokkaido.

ORDER AT:  
Honolulu: Okazuya Dept., 8am - 4pm  
Customer Service, after 4pm  
Pearl City & Waipahu: Customer Service

**HOKKAIDO PREMIUM OSECHI 3 TIER** w/ 2 Snow Crab Reg. Price \$348.00 **\$299**

1 TIER \$99  
2 TIER \$169  
3 TIER \$199

Reg. Price \$149.00  
Reg. Price \$219.00  
Reg. Price \$249.00

Contents may not be exactly as shown. Payment due at time of order. No cancellations or refunds. No exchange or returns.

**Jonetz JUMBO IMITATION CRAB LEGS**

21.16 oz. **9.99**

**Koha TOFU**

Soft or Firm. 16 - 17 oz. **2.39**

**Igarashi RAMEN**

Single packed. Selected. 3.20 - 3.88 oz. **1.49**

**Igarashi RAMEN**

Selected. 3 pk. 10.05 - 11.95 oz. **3.99**

**S&B GOLDEN CURRY**

Selected. 7.8 oz. **3.99**

**Tamanishiki SUPER PREMIUM RICE**

15 lb. **29.99**

**Utage SHORT GRAIN RICE**

15 lb. Product of Vietnam. **14.99**

**Blue Bunny ICE CREAM**

Selected. 46 - 48 oz. **4.99**

**Brown Cow WHOLE MILK YOGURT**

Selected. 5.3 oz. **4 for \$5**

**Sara Lee ARTESANO BREAD**

Selected. 20 oz. **5.99**

**Coral CHUNK LIGHT TUNA**

Selected. 5 oz. **4 for \$5**

**Ox & Palm CORNED BEEF**

Round can only. 11.5 oz. **5.79**

**Nabisco CHIPS AHOY! COOKIES**

Selected. 7 - 13 oz. **2 for \$8**

**Kona or Maui Brewing BEER**

Selected. 6 pk./12 oz. **10.99**

**Asahi SUPER DRY BEER**

11.2 oz./12 pk. cans. **13.49**

**FOLDING MATTRESS**

• Single. 31" x 75" x 3.75". **85.99**

• Full. 53" x 69" x 3.75". **135.99**

**MICOM RICE COOKER/WARMERS**

Computerized technology cooks flawless rice. Menu settings for White, Mixed, Brown, Quick & more. Steam menu with steam tray.

• #NS-TSC10/XJ. 5.5-Cup. **179.99**

• #NS-TSC18/XJ. 10-Cup. **199.99**



## Tohoku Fair

Featuring popular food items from Tohoku region, northeast Japan. This traditional region consists of six prefectures: Akita, Aomori, Fukushima, Iwate, Miyagi, and Yamagata. We will have Seafood products, Miso, Noodles, Rice, Fruit Juice, Rice Crackers, Desserts and more!



Limited to 5 units unless otherwise specified. We reserve the right to correct typographical or pictorial errors in our advertisement.

Honolulu & Waipahu Stores: 24 Hours (Ad Effective: September 18th., 6am. Liquor available 6am - Midnight.) Pearl City Store: 6am - Midnight.  
HONOLULU STORE 973-4800 • PHARMACY 973-6661 PEARL CITY 453-5500 WAIPAHU STORE 678-6800 • PHARMACY 678-6831



**FRESH GROUND SIRLOIN**  
90% lean.  
**6<sup>99</sup>** lb.



**THIN SLICED BEEF SHORTRIBS**  
**10<sup>99</sup>** lb.



**BONELESS PORKLOIN**  
For Shabu Shabu. Mainland chilled.  
**5<sup>99</sup>** lb.



**PIG'S FEET**  
Long Cut. Previously frozen.  
**3<sup>29</sup>** lb.



**Jonetz GYUTAMA or KALBI DON**  
Fully cooked. Frozen. 16 oz.  
**9<sup>99</sup>**



**Ono Ono Brand LAU LAU**  
Pork or Chicken. 3 pk.  
**14<sup>99</sup>**



**RED or GREEN SEEDLESS GRAPES**  
**2<sup>99</sup>** lb.



**WHITE PEACHES**  
**2<sup>99</sup>** lb.



**OKINAWAN SWEET POTATOES**  
Local.  
**1<sup>99</sup>** lb.



**CHINESE CABBAGE**  
**1<sup>29</sup>** lb.



**BROCCOLI CROWNS**  
**2<sup>99</sup>** lb.



**HEAD LETTUCE**  
**2<sup>99</sup>** lb.



**LOCHLANDER SCOTTISH SALMON FILLET**  
**12<sup>99</sup>** lb.



**KAUAI HEAD-ON SHRIMP**  
Previously frozen. (16/20).  
**6<sup>99</sup>** lb.



**SPICY CALAMARI STRIPS**  
Frozen. 12.34 oz.  
**7<sup>49</sup>**



**Redondo's PORTUGUESE SAUSAGE**  
King Size. Selected. 12 oz.  
**2 for \$7**



**Coffeemate CREAMER**  
Selected. 32 oz.  
**4<sup>99</sup>**



**Smart Ones FROZEN ENTREES**  
Selected. 8.5 - 9 oz.  
**2<sup>99</sup>**



**Land O' Frost DELI SHAVED LUNCHEAT**  
Selected. 9 oz.  
**2 for \$5**



**Okuhara FISHCAKE**  
Selected. 5.5 oz.  
**2<sup>59</sup>**



**Mizkan KIN NO TSUBU NATTO**  
Selected. 3 pk., 4.7 - 5.93 oz.  
**1<sup>89</sup>**



**Hakkaisan HONJOZO SAKE**  
• 720 ml. **18<sup>99</sup>**  
• 1.8 L. **44<sup>99</sup>**



**CK Mondavi or Livingston WINES**  
Selected. 1.5 L.  
**10<sup>99</sup>**



**Karkov VODKA**  
750 ml. **7<sup>99</sup>**



**Okuhara FISHCAKE**  
Selected. 5.5 oz.  
**2<sup>59</sup>**



**Mizkan KIN NO TSUBU NATTO**  
Selected. 3 pk., 4.7 - 5.93 oz.  
**1<sup>89</sup>**



**Taisha KODAWARI ODEN SET WITH DASHI**  
14.1 oz.  
**7<sup>99</sup>**



**Jonetz AJITSUKE NORI**  
42 pk./2.16 oz.  
**7<sup>99</sup>**



**Jonetz SHOYU**  
Premium Marudaisu or Genen Less Salt. 33.8 oz.  
**2<sup>99</sup>**



**Jonetz PURE SESAME SEED OIL**  
13.52 oz. **5<sup>49</sup>**



**Happy Foods SHIRETOKO SAKE FLAKES**  
2.11 oz. **3<sup>99</sup>**



**Maruchan BOWL NOODLE**  
Akai Kitsune Udon or Midori No Tanuki Soba. 3.31 - 3.52 oz.  
**2<sup>19</sup>**



**Uegaki MIX ARARE**  
11 oz. **4<sup>39</sup>**



**Campbell's CANNED SPAGHETTI or SPAGHETTI O'S**  
Selected. 14.8 oz. **4 for \$5**



**Lindsay OLIVES**  
Selected. 5.75 - 6 oz. **2<sup>29</sup>**



**Maseca INSTANT CORN MASA FLOUR or MIX**  
Selected. 4 - 4.4 lb. **6<sup>49</sup>**



**Essential Everyday COOKING OIL**  
Selected. 40 oz. **4<sup>69</sup>**



**Lion COFFEE**  
Selected. 24 oz. **15<sup>99</sup>**



**Essential Everyday GRANULATED SUGAR**  
4 lb. **4<sup>99</sup>**



**HATOMUGI SKIN CARE PRODUCTS**  
Selected. 6.3 - 16.9 oz. **7<sup>99</sup> - 10<sup>99</sup>**



**PREMIUM ANTI-AGING DUO & CANADEL ALL IN ONE GEL WITH FREE POUCH**  
Selected. 2.05 - 3.2 oz. **33<sup>99</sup> - 49<sup>99</sup>**



**Handi-Foil or Jiffy FOIL PANS**  
Selection may vary by store. **30% OFF** Regular Retail Prices



**stansport DUAL BURNER HEAVY-DUTY STOVE WITH STAND**  
#217. Heavy duty steel frame holds 2 full-size pots or pans. Dual 35,000 BTU high-output cast iron burners. 28"-34" high. **139<sup>99</sup>**



**Chef's Touch PORTABLE BUTANE GAS STOVE**  
#MS-3800. Great for picnics, barbecues, or camping. Automatic safety shut-off. Includes case. **22<sup>99</sup>**



**Qwik Sand Xtermco QWIK SAND GLUE TRAPS**  
For Rats & Mice. Heavier Glue Board. 2 ct. **2<sup>99</sup>**